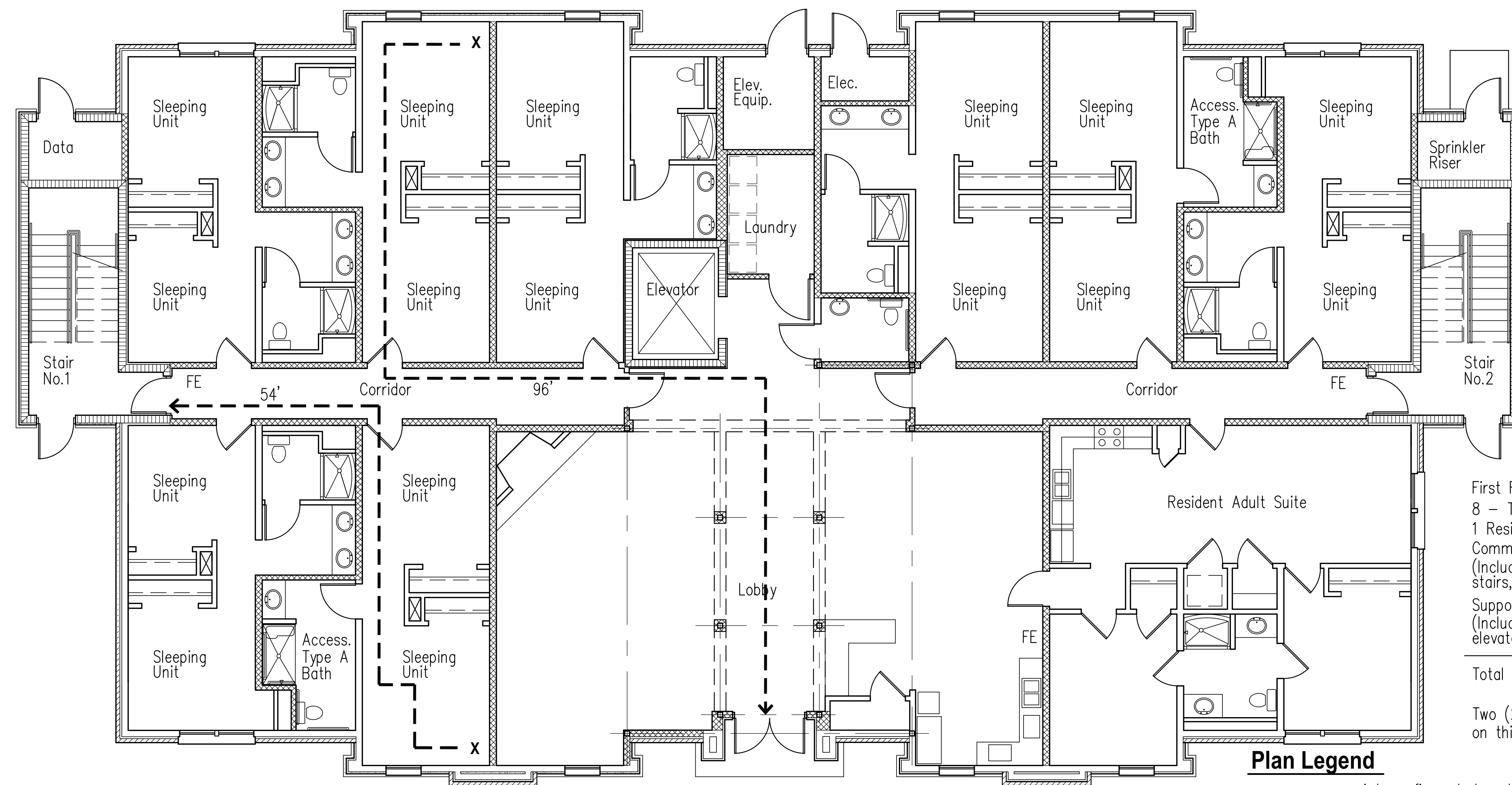


**2 Second Floor Plan**  
 L1.1 Scale: 1/8" = 1'-0"

**Second Floor Data:**  
 12 - Two Bed Units \_\_\_\_\_ 5,319 sq. ft.  
 Common Areas \_\_\_\_\_ 1,812 sq. ft.  
 (Includes lobby, study room, corridors, stairs, elevator, washers)  
 Support Areas \_\_\_\_\_ 128 sq. ft.  
 (Includes mech, janitor)  
**Total Sq. Ft. 7,259 sq. ft.**

Two (2) Type A Bathrooms (accessible) on this level. All others are Type B

**NOTES:**  
 1. These doors and partitions are not rated, for sound reduction only.



**1 First Floor Plan**  
 L1.1 Scale: 1/8" = 1'-0"

**First Floor Data:**  
 8 - Two Bed Units \_\_\_\_\_ 3,660 sq. ft.  
 1 Resident Adult Suite \_\_\_\_\_ 923 sq. ft.  
 Common Areas \_\_\_\_\_ 2,568 sq. ft.  
 (Includes lobby, corridors, stairs, elevator, washers)  
 Support Areas \_\_\_\_\_ 225 sq. ft.  
 (Includes data, sprink, elevator equip, elec.)  
**Total Sq. Ft. 7,376 sq. ft.**

Two (2) Type A Bathrooms (accessible) on this level. All others are Type B

**Plan Legend**  
 [Hatched Box] 1 hour fire rated partition to deck  
 FE Fire extinguisher location  
 Note: See sheet A2.7 for rated assemblies.

**Building Code Review Summary**

**Project Name:** Mens Residence Hall  
**Project Location:** Faulkner University  
 Atlanta Highway  
 Montgomery, Alabama  
**Jurisdiction:** City of Montgomery  
 Building Department  
 Montgomery, Alabama  
**Applicable Codes:** 2003 International Building Code  
 2009 International Energy Conservation Code  
 2003 International Plumbing Code  
 2003 International Mechanical Code  
 2003 International Fuel Gas Code  
 2014 National Electrical Code  
 ICC/ANSI A117.1-2003  
 NFPA 13R Fire Sprinkler Code  
**Project Description:** The proposed building is a four story dormitory for college students with an elevator. There are 44 units with 2 bedrooms each. Total of 88 beds. Main Lobby area on first floor with small social areas on each upper level.

**Type of Occupancy:** R-2 Residential  
**Type of Construction:** Type V-A  
 Fully Sprinklered  
**Fire Resistance Ratings:** Exterior Bearing Walls - 0 hour  
 (based on min. 30' separation)  
 Interior Bearing Walls - 1 hour  
 Floor Construction - 1 hour  
 Roof Construction - 1 hour  
 Stairway Enclosures - 2 hour  
 Elevator Enclosure - 2 hour  
 Shafts conn. 4 floors - 2 hour  
**Occupant Load:** 200 sf gross / person  
 Level one = 37 people (18 beds)  
 Level two = 37 people (24 beds)  
 Level three = 37 people (24 beds)  
 Level four = 37 people (24 beds)  
 Total occupant Load = 148 people.  
**Means of Egress:** Minimum egress width at corridors = 44"  
 Minimum number of exits = 2

ISSUE DATE	Permit Docs	10-26-16

MEN'S RESIDENCE HALL  
 FAULKNER UNIVERSITY  
 MONTGOMERY, ALABAMA  
 GMC# AMGM160044

